



SOFITEL  
IS NOW AVAILABLE  
ON THE  
ACCORHOTELS APP

**SOFITEL LONDON STJAMES**

6 WATERLOO PLACE - SW1Y 4AN - LONDON - UNITED KINGDOM  
TEL.: +44 (0)20 7747 2237 - H3144-SB@SOFITEL.COM

[WWW.SOFITELSTJAMES.COM](http://WWW.SOFITELSTJAMES.COM)



INSPIREDMEETINGS™



**SOFITEL**  
HOTELS & RESORTS

LONDON ST JAMES

TABA HEIGHTS BUDAPEST PHNOM PENH  
QUEENSTOWN JINAN BRISBANE AUCKLAND  
BANGKOK BEIJING BEIRUT BERLIN RABAT  
BUENOS AIRES CAIRO CHENGDU CHICAGO  
ROME BIARRITZ KRABI SANYA CHONGQING  
WARSAW ESSAOUIRA MALABO HAMBURG  
FLORIANOPOLIS FRANKFURT GOLD COAST  
GUANGZHOU XINING GUIYANG HAIKOU  
WROCLAW WELLINGTON HANGZHOU HANOI  
HARBIN HO CHI MINH CITY ZHENGZHOU  
LOS ANGELES SIEM REAP LIANYUNGANG  
LYON BRUSSELS **LONDON** MANILA ABIDJAN  
ABU DHABI KUNMING AGADIR AL KHOBAR  
ALGIERS ATHENS SHENYANG SINGAPORE  
SYDNEY LUXOR LISBON DUBAI GUARUJA  
XIAN BOGOTA MELBOURNE MARRAKECH  
MARSEILLE BALI QUIBERON CASABLANCA  
PARIS MIAMI MONTEVIDEO MONTREAL  
MOSCOW MUMBAI WUXI MUNICH NEW YORK  
JEDDAH PARIS LA DEFENSE PHILADELPHIA  
RIO DE JANEIRO RIYADH SHANGHAI NINGBO  
TIRANA VIENNA NANJING WASHINGTON  
MACAU LUXEMBOURG SOPOT STRASBOURG



---

## FACILITIES

183 BEDROOMS WITH 18 SUITES  
INCLUDING  
1 ROYAL SUITE  
7 PRESTIGE SUITES  
10 JUNIOR SUITES

RESTAURANT, BAR AND LOUNGE

50 SPA FEATURING STEAM ROOM  
AND JACUZZI

50 FIT WITH SHA CHAIR

12 MEETING ROOMS  
INCLUDING  
1 EXECUTIVE BOARDROOM  
DEDICATED MEETING PLANNERS

BUSINESS CENTRE

FREE WI-FI  
«THE GOLDEN KEYS» CONCIERGE  
VALET PARKING

---

# SOFITEL INSPIREDMEETINGS

---

EXPERIENCE THE «ART DE RECEVOIR» AT SOFITEL  
LONDON ST JAMES WITH 5852 SQFT (542M<sup>2</sup>)  
OF ROOM FLOOR SPACE AT YOUR DISPOSAL,  
SELECT FROM OUR 12 MEETING ROOMS TO  
HOST YOUR EVENTS AND CONFERENCES. OUR  
INSPIREDMEETINGS™ TEAM WILL BE AT YOUR  
DISPOSAL TO ENSURE THAT YOUR EVENTS AND  
CONFERENCES ARE A SUCCESS.

---



Westminster suite

## MAGNIFIQUE FACILITIES

A hidden gem in the heart of London, Sofitel London St James lies discreetly in one of the most prestigious and lively areas of London. Created in a magnificent grade II listed building, the five star hotel boasts accommodation to suit every taste.

The hotel, comprising 183 rooms with 10 Junior Suites, 7 Prestige Suites and 1 Royal Suite, is enhanced by a luxury spa, SoSPA and a gym, SoFIT. Offering a sophisticated but relaxed welcome, the hotel features an all-day dining restaurant, The Balcon, an elegant cocktail bar, the St James Bar, and a relaxing lounge, The Rose Lounge, ideal for afternoon teas. 24hour in room dining is also available.



Bloomsbury suite

## REFINED MEETING ROOMS

To cater for all manner of functions, from discreet board meetings to lavish banquets or weddings, Sofitel London St James provides banqueting facilities in one of the most sought-after sites in London. All named after distinguished districts of London, the 12 rooms, diverse in size and versatile, have a neutral light feel perfect for any kind of meeting or event.

All the rooms are equipped with the latest state-of-the-art audio visual facilities such as LED screen, Laser projector and screen, Ctouch screen, Virtual meeting rooms.

The Boardroom Suite with its own ante room and private dining room is ideal for an exclusive meeting or a comfortable private breakfast, lunch or dinner for up to 12 people, while the Westminster Suite can accommodate 200 guests theatre style.

## INSPIRED BY YOU, STAGED BY US

InspiredMeetings™ are organised by experts who capture the essence of your project in order to make your event unique and personalised. Committed to building completely successful and tailored meetings and events, the dedicated InspiredMeetings™ team will suggest creative banqueting options to fit your needs.

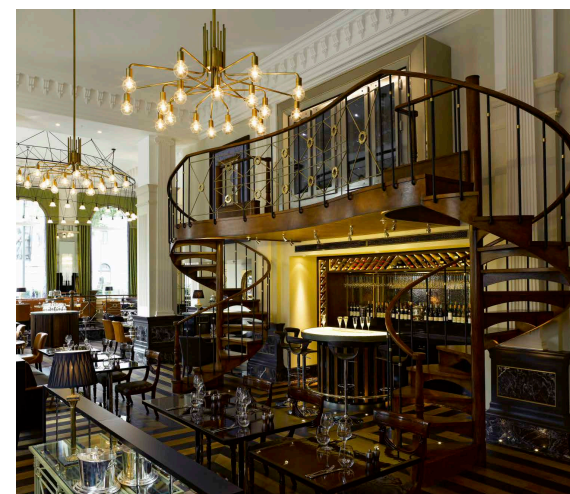


Belgravia suite

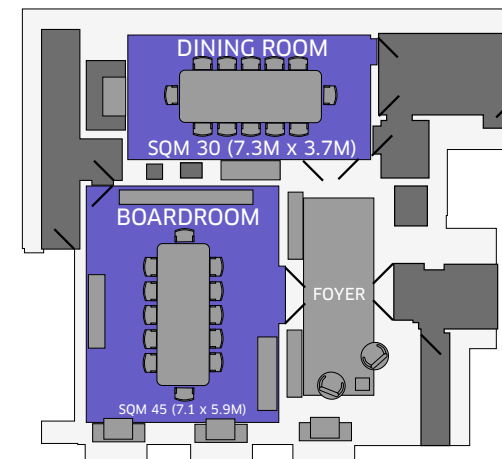
## UNIQUE AND TAILOR MADE BANQUETING

Dedicated to your event, the InspiredMeetings™ Planners are here to plan your event with you in the smallest details to ensure you enjoy a seamless service and a stress-free experience. Whether you are organising a board meeting or a private dinner, we will work with you and the Executive Chef to deliver a creative menu.

Our restaurant, The Balcon, features an exclusive private dining room which can accommodate up to 20 guests. Flooded with natural daylight and separated by silk curtains, the dining room offers a very intimate area whilst giving the opportunity to enjoy the atmosphere of the restaurant.



The Balcon



## MEETING ROOM LAYOUT AND CAPACITIES

Meeting Room	Size (m)	Square Metres	Size (ft)	Square Feet	Theatre	Classroom	Cabaret	U-Shape	Boardroom	Banquet	Standing Re-ception	LED Screen	Laser projector and screen	Ctouch screen	Virtual Meeting Rooms
<b>Westminster</b>	19 x 7.9	155	62 x 26	1750	200	125	96	45	45	143	180	X			
Westminster A	12.5 x 8.7	105	41 x 29	1200	130	60	50	30	30	90	120	X			
Westminster B	6.5 x 7.9	50	21 x 26	540	60	40	25	20	20	30	40	X			
<b>Mayfair</b>	20.7 x 9.3	195	68 x 31	2100	180	125	86	36	36	132	180		X		
Mayfair A	11.2 x 7.7	85	37 x 25	950	90	50	35	25	25	60	80		X		
Mayfair B	9.5 x 9.3	85	31 x 31	950	90	50	35	25	25	60	80		X		
<b>Piccadilly &amp; Bloomsbury</b>	12.6 x 6.5	80	41 x 21	860	70	60	40	30	30	50	60		X		
Piccadilly	6.2 x 5.8	35	20 x 19	380	30	25	20	18	18	20	30		X		
Bloomsbury	6.3 x 6.5	40	21 x 21	480	40	25	20	18	18	20	30		X		
<b>Kensington</b>	7 x 6.2	44	23 x 20	460	40	25	-	18	18	20	30		X		
<b>Belgravia</b>	6.6 x 4.7	30	22 x 15	330	-	-	-	-	12	-	-			X	X
<b>Chelsea</b>	4.9 x 4.9	25	16 x 16	260	-	-	-	-	8	-	-			X	X
<b>Boardroom</b>	7.1 x 5.9	45	23 x 19	440	-	-	-	-	12	12	-	X			X
<b>Private Dining Room</b>	7.3 x 3.7	30	24 x 12	290	-	-	-	-	12	12	-				

EACH ROOM FEATURES THE ESSENTIAL EQUIPMENT FOR YOUR MEETINGS

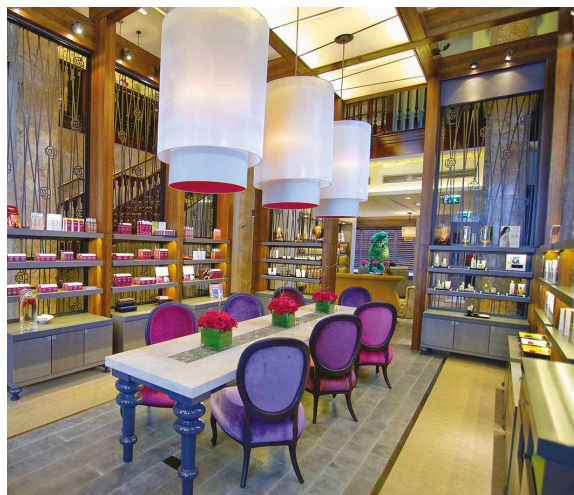
GLASS SCREENS WITH REAR PROJECTION OR LCD SCREENS, WI-FI INTERNET  
STATE-OF-THE-ART AUDIO VISUAL FACILITIES, VIDEO CONFERENCING FOR UP TO 12 PEOPLE



The Rose Lounge



St James Bar



SoSPA